

08980

IDRC *Striga* Project  
*Striga* Physiology 3-P-85-0343

59

# Progress Report 1988 and Experiments 1989

---

Dr. M.A. Osman  
ICRISAT Sahelian Center  
B.P. 12404, Niamey  
République du Niger

## TABLE OF CONTENTS

1. Progress Report Rainy Season 1988	1
1.1. Introduction	1
1.2. <i>Striga</i> experiments	1
1.2.1. Soil temperature and moisture as preconditioning treatments	1
1.2.1.1. Effect of soil temperature on <i>Striga</i> germination, viability and emergence	4
1.2.1.2. Effect of soil moisture on <i>Striga</i> germination, viability and emergence, ICRISAT Center, rainy season 1988	6
1.2.2. Effect of nitrogen on <i>Striga</i> emergence	8
1.3. Conclusions and recommendations	8
2. Field layouts and experimental designs rainy season 1989	10
2.1. <i>Striga</i> experiments IDRC project	10
2.1.1. Effect of nitrogen on <i>Striga</i> infestation	10
2.1.1.1. Treatments of <i>Striga</i> nitrogen trial 1 at Sadore (STRINIS 1)	11
2.1.1.2. Treatments of <i>Striga</i> nitrogen trial 2 at Sadore (STRINIS 2)	12
2.1.1.3. Treatments of <i>Striga</i> nitrogen trial at Bengou (STRINIS)	13
2.1.2. Effect of soil temperature on <i>Striga</i> germination and emergence	14
2.1.2.1. Treatments of <i>Striga</i> temperature trial	15
2.2.1. Longterm observation of <i>Striga hermonthica</i> in a millet field	16
2.2. <i>Striga</i> experiments ISC	17
2.2.2. Effect of cultural practices on <i>Striga</i> infestation of pearl millet	17
2.2.2.1. Treatments and randomisation of <i>Striga</i> management trial	18

2.2.3. Effect of handpulling of <i>Striga</i> on yield of pearl millet	19
2.2.3.1. Treatments and randomisation of <i>Striga</i> handpulling trial at Bengou	20
2.2.3.2. Treatments and randomisation of <i>Striga</i> handpulling trial at Sadore	21
2.2.4. Evaluation of wild millet species in pots for <i>Striga</i> reaction	22
2.2.4.1. Entries for evaluation of wild millet species in pots for <i>Striga</i> reaction	23
 Annex 1. Field plan of ISC station Sadore	 25
Annex 2. Field plan of <i>Striga</i> sick plot B 1 at Sadore	26
Annex 3. Field plan of <i>Striga</i> sickplot B 2 at Sadore	27
Annex 4. Summary list of <i>Striga</i> trials conducted at ISC	28

## 1. Progress Report Rainy Season 1988

### 1.1. Introduction

*Striga* germination and infestation will not occur unless specific conditions are met. The seasonal fluctuation of *Striga* incidence often observed in the field is regarded as a direct result of changes in environmental and ecological factors. It has been shown that soil temperature, moisture and soil fertility play a major role in its life cycle. Therefore, identification of optimum conditions required for its growth and development is crucial for its control.

Two field experiments were conducted at ICRISAT Center during the Kharif season of 1988. The effect of soil temperature, moisture and nitrogen on *Striga asiatica* (L.) Kuntze. germination, viability and emergence were investigated. These experiments and the results obtained are presented below.

### 1.2. *Striga* experiments

#### 1.2.1. Soil temperature and moisture as preconditioning treatments

In this experiment, 4 x 1.2 m plots were selected to test the effect of soil temperature and moisture on *Striga* germination and viability. On 14 May, 1988, these plots were hand sown with *Striga* at the rate of 0.9 kg ha<sup>-1</sup>. A small sample of the same seeds were put in small nylon bags and were buried at a depth of 2 cm in each plot. Polythene, bare soil and hay mulches were used to impose temperature treatments giving high, medium and low soil temperatures, respectively. The mean maximum daily temperatures recorded at 2 cm and 10 cm soil depths in the polythene, hay mulch and bare soil treatments are shown in Figures 1a and 1b.

These temperature conditions were expected to simulate the average soil temperatures that prevail in many parts of the SAT region during the year. Soil moisture treatments were applied on the same plots (twice and 10 days apart) using irrigation levels of 0, 30 and 60 mm. The average soil moisture contents taken a day before and after irrigations are shown in Tables 2. The amount of rainfall received during the study period was above normal (Table 1).

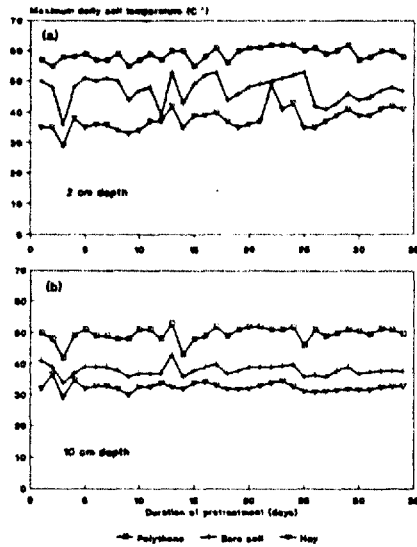


Figure 1. Maximum daily soil temperatures recorded at 2 cm (a) and 10 cm (b) soil depths. ICRISAT Center, rainy season 1988.

Table 1. Total monthly rainfall at the study area in 1988 compared to the long term average monthly rainfall in ICRISAT Center.

Month	Total rainfall (mm)	
	1988	Normal
June	109.3	115.5
July	236.3	171.5
August	215.3	156.0
September	169.2	181.0
Total	730.1	624.0

**Table 2. Mean soil moisture content (v/v) across all soil treatments at 15 cm depth taken a day before and after irrigation, ICRISAT Center, rainy season 1988.**

Irrigation level (mm)	Soil moisture content (v/v)	
	Before irrigation (%)	After irrigation (%)
0	15.0	14.0
30	13.8	24.1
60	14.5	28.0
SE	±3.4	±1.5
CV (%)	6.7	4.6

A factorial experimental design in randomized complete block was used. The temperature-moisture treatment combinations represented the blocks and these were replicated 4 times.

1.2.1.1. Effect of soil temperature on *Striga* germination, viability and emergence.

The nylon bags containing the *Striga* seeds were recovered from the soil after 34 days of preconditioning. Percent *Striga* seed germination and viability were measured. The data presented in Table 3 show that seeds exposed to 60°C (polythene) at top 2 cm soil depth did not germinate and were not viable after 34 days of pretreatment at the top 2 cm soil depth. At 48 and 37°C (bare and hay treatments, respectively, Fig.1a), however, seed germination and viability were high and similar. In these treatments, about 75% of the seeds germinated in the laboratory and about 87% were viable (Table 3).

Some researchers argue that *Striga* seeds stored in hot humid conditions do not necessarily lose viability but under go a state designated as 'wet dormancy' and such seeds will germinated if dried and sufficiently preconditioned. Several viability tests conducted to verify this hypothesis showed that the *Striga* seeds stored under the polythene were killed.

Table 3. Germination and viability of *Striga* seeds in response to soil temperature (as obtained under polythene, hay and bare soil mulch treatments), ICRISAT Center, rainy season 1988.

Soil treatment	Germination <sup>1</sup> (%)	Viability (%)
Polythene	0.0 (0.0) <sup>2</sup>	0.0 (0.0)
Bare	75.1 (60.1)	87.8 (69.8)
Hay	73.5 (59.1)	87.1 (69.0)
SE	±1.54	±1.75
CV (%)	5.5	5.3

1. *Striga* seeds were buried at 2 cm soil depth for 30 days.

2. Arcsine transformed data are shown in parentheses.

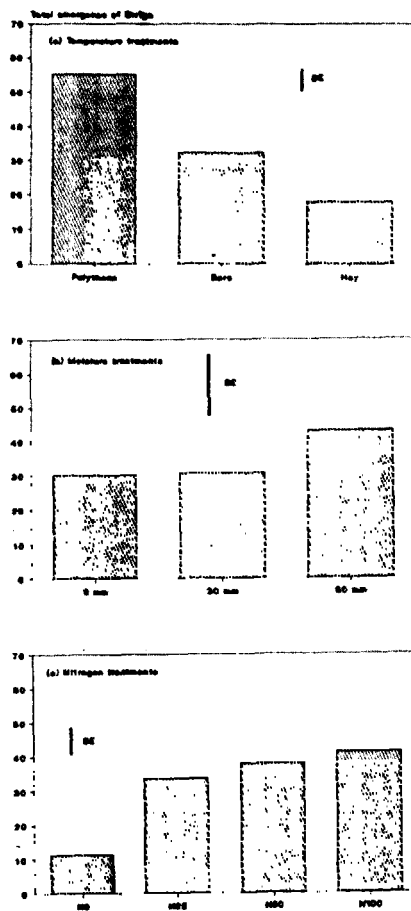


Figure 2. Total number of *Striga* plants emerged in plots pretreated with different temperature (a), irrigation (b) and nitrogen treatments (c), ICRISAT Center, rainy season 1988.



On June 13, 1988, immediately after temperature treatments were completed, all plots were sown with a *Striga*-susceptible sorghum genotype (CSH-1). *Striga* seedlings started to appear above ground about 35-40 days after sowing. Counts of emergence were initiated 2 weeks later and at a weekly interval thereafter. The results presented in Figure 2a show that about 55, 31 and 15 *Striga* plants emerged in the polythene, bare soil and hay mulch treatments, respectively.

While emergence of high numbers of *Striga* plants in the polythene treatment confirms earlier laboratory findings that high temperature promotes *Striga* infestation, it does not explain the lack of germination and viability observed for seeds recovered from the same plots (Table 3). It is possible that the observed *Striga* plants could have come from lower soil depths where conditions were not detrimental to the seeds. For example, mean maximum soil temperature at the 10 cm soil depth (Fig. 1b) was about 10°C lower than that recorded at the top 2 cm (where seeds were buried) soil depth. At 2 cm, also, soil moisture was expected to be much higher than that observed at the 15 cm depth (Table 2) because any water that evaporated was trapped by the polythene cover and was then precipitated at the soil surface. Therefore, it is likely that a combination of high temperature and moisture killed the seeds. This indicates that any *Striga* control practices involving only top soil surfaces may not be effective.

#### 1.2.1.2. Effect of soil moisture on *Striga* germination, viability and emergence, ICRISAT Center, rainy season 1988.

*Striga* germination and viability as influenced by irrigation levels are presented in Table 4. It appears that *Striga* seeds were not affected by the level of irrigation used in this study. Regardless of the amount of water applied, germination and viability of seeds remained 48-50% and about 59%, respectively, across all irrigation levels. In our study, therefore, either (a) the frequency (twice) or the irrigation levels used were not enough to cause significant change (except under the polythene) in soil moisture content at the desired depth (2 cm), or (b) irrigation as pretreatment under field conditions, unless a continuous wetting of soil results, does not have significant effects on *Striga* germination and viability.

However, as sorghum matured, more *Striga* plants emerged in plots previously applied with 80 mm water compared to those receiving lower rates (Fig. 2b). The cause of the large increase in *Striga* emergence under high irrigation is obscure. Laboratory and field studies show that *Striga* incidence is inversely related to soil moisture content. This phenomenon, however, is observed only when moisture treatments are applied during crop growth period where wet conditions were observed to kill emerged *Striga* plants. In our study, all of the *Striga* plants died 34 days after emergence (Fig. 3) and none of these plants reached flowering stage. This was attributed to the unusually high rainfall obtained during the growth period (Table 1).

Table 4. Germination and viability of *Striga* seeds in response to different levels of irrigation.

Irrigation level (mm)	Germination <sup>1</sup> (%)	Viability (%)
0	50.2 (40.2) <sup>2</sup>	58.3 (40.4)
30	48.4 (39.0)	57.8 (45.8)
60	50.0 (40.0)	58.9 (46.8)
SE	±1.28	±2.10
CV (%)	4.5	6.3

1. *Striga* seeds were buried at top 2 cm soil depth for 34 days.

2. Arcsine transformed data are shown in parentheses.

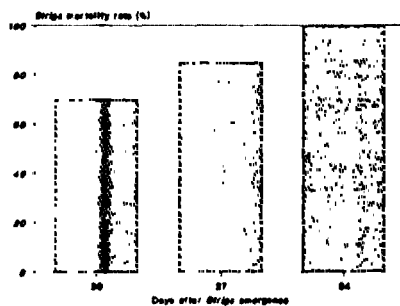


Figure 3. Rate of *Striga* mortality observed in the field after the weed plants emerged, ICRISAT Center, rainy season 1988.

### 1.2.2. Effect of nitrogen on *Striga* emergence

In this experiment, the effect of nitrogen on *Striga* was evaluated. Plots used were identical in size to those used in Experiment I. The soil was tested for residual nitrogen before treatments were applied. The soil analysis showed a mean nitrogen content of 20 kg ha<sup>-1</sup> at the top 30 cm soil depth.

Using urea (46-0-0) as the nitrogen source, levels of 0, 25, 50 and 100 kg ha<sup>-1</sup> were added to the soil and were applied as a top dressing at sowing. *Striga*-susceptible sorghum (CSH-1) was sown on June 13, 1988.

The experimental design used was a randomized complete block with 4 replications. Each nitrogen level was assigned to a block giving a total of 4 blocks per replication.

*Striga* emergence at the high rates of fertilizer application was delayed a little (data not presented) so counts were not started until 65 days after sowing. The total number of *Striga* plants (mean over replications for each reading) observed under different rates of nitrogen applications is shown in Figure 2c. The final number of *Striga* plants recorded at 0, 25, 50 and 100 kg ha<sup>-1</sup> levels of nitrogen applications was 11, 34, 38 and 40 plants per plot. This is contrary to laboratory results where *Striga* infestation was observed to be inversely proportional to nitrogen level. Despite the relatively high infestation at the high levels of nitrogen, however, there was not any apparent loss of vigor in sorghum. This suggests that nitrogen fertilizer increases crop tolerance to the parasite probably by rendering the host plants more competitive for moisture and nutrients. The exact mechanism involved, however, is unclear and further studies are needed to examine the phenomenon. The increase in *Striga* emergence may be related to an improved host root system which, in turn, had some stimulating effects on the parasite.

### 1.3. Conclusions and recommendations

The present study indicates that:

- high temperature and probably excess moisture seem to break seed dormancy very rapidly and these seeds will die if such conditions are prolonged,
- most infested fields contain a large reservoir of *Striga* seeds, therefore, even if seed at soil surface is killed *Striga* may continue to emerge from lower soil depths if conditions are favorable and
- increased soil fertility seems to increase crop tolerance to *Striga* attack without apparent reduction in parasite infestation.

Based on these conclusions, it is obvious that a number of points need to be verified with special emphasis on:

- *Striga* species, races and strains in West Africa (b) the behavior of *Striga* seeds at different soil depths which we believe (1) changes with temperature, moisture and nutrient level within the soil profile and (2) has large influences on the spatial and seasonal distribution of *Striga* incidence as often experienced in field situations. This can be verified by burying seed samples in different soil depths and then testing germination, viability and, may be, emergence.
- identification of optimum soil temperature and moisture level needed for maximum *Striga* infestation or death. These can be used for screening for crop tolerance/resistance as well as for eradication purposes. Part of these experiments will be conducted in the laboratory using a thermogradient plate.
- and adoption of techniques, e.g. fertilizers, that improve crop growth and development. Such techniques may not necessarily reduce *Striga* incidence but there is strong evidence that the parasite effect is somehow reduced. Why and how this happens need to be examined.

## 2. Field Layouts and Experimental Designs Rainy Season 1989

### 2.1. *Striga* experiments IDRC project

#### 2.1.1. Effect of nitrogen on *Striga* infestation

<b>Experiment</b>	STRINI
<b>Objectives</b>	To investigate the response of <i>Striga heronothica</i> in association with pearl millet to various levels of soil nitrogen.
<b>Locations</b>	Sadoré : STRINIS 1, STRINIS 2 in field 82. Bengou (2 farmers' fields): STRINIS 1: Mallam Garba, STRINIS 2: Yaou Gouywa.
<b>Design</b>	RBD.
<b>Plot size</b>	Sadoré: 5 rows 7.2 m long Bengou : 5 rows 9 m long
<b>Spacing</b>	Sadoré: 80 cm between hills, 80 cm between rows and 1 m (alley) between plots. Bengou: 1 m between hills and rows.
<b>Thinning</b>	3 plants per hill.
<b>Weeding</b>	Remove all non <i>Striga</i> weeds.
<b>Replications</b>	Six
<b>Fertilizers</b>	Apply <i>ONLY</i> urea during planting.
<b>Treatments</b>	A : No nitrogen (control) B : 30 kg of nitrogen ha <sup>-1</sup> (urea 48%) C : 60 kg of nitrogen ha <sup>-1</sup> (urea 48%) D : 90 kg of nitrogen ha <sup>-1</sup> (urea 48%)  Variety: Sadoré local (Sadoré), NK Gaya (Bengou).
<b>Date of planting</b>	Sadoré: June 29, 1989; Bengou: June 22, 1989.
<b>Crop protection</b>	As required.
<b>Irrigation</b>	Rainfed.
<b>Observations</b>	1) First date of <i>Striga</i> emergence. 2) of emerged <i>Striga</i> plants; Sadoré: weekly, Bengou: bi-weekly. 3) of <i>Striga</i> reaching flowering. 4) of <i>Striga</i> plants at harvest. 5) of hills harvested. 6) of panicles per hill. 7) Panicle weight. 10) Total grain yield.

### 2.1.1.1. Treatments of *Striga* nitrogen trial 1 at Sadoré (STRINIS 1)

STRINIS1

Treatments	Plot numbers					
	R1	R2	R3	R4	R5	R6
A	101	203	303	404	501	602
B	103	204	301	402	504	603
C	102	201	304	401	503	604
D	104	202	302	403	502	601

Fieldplan:

	3.2 m		24.2 m			
	101	201	301	401	501	601
	A	C	B	C	A	D
	102	202	302	402	502	602
	C	D	D	B	D	A
31.8 m	103	203	303	403	503	603
	B	A	A	D	C	B
	104	204	304	404	504	604
	D	B	C	A	B	C
	R1	R2	R3	R4	R5	R6

Treatments:

- A: Control, no nitrogen
- B: Nitrogen 30 kg ha<sup>-1</sup>
- C: Nitrogen 60 kg ha<sup>-1</sup>
- D: Nitrogen 90 kg ha<sup>-1</sup>

# 2.1.1.2. Treatments of *Striga* nitrogen trial 2 at Sadoré (STRINIS 2)

## STRINIS2

Treatments	Plot numbers					
	R1	R2	R3	R4	R5	R6
A	102	203	304	404	503	602
B	101	204	301	402	504	601
C	103	202	302	403	502	603
D	104	201	303	401	501	604

## Fieldplan:

	24.2 m					
3.2 m	101 B	201 D	301 B	401 D	501 D	601 B 7.2
	102 A	202 C	302 C	402 B	502 C	602 A 1.0
31.8 m	103 C	203 A	303 D	403 C	503 A	603 C
	104 D	204 B	304 A	404 A	504 B	604 D
	R1	R2	R3	R4	R5	R6

## Treatments:

- A: Control, no nitrogen
- B: Nitrogen 30 kg ha<sup>-1</sup>
- C: Nitrogen 60 kg ha<sup>-1</sup>
- D: Nitrogen 90 kg ha<sup>-1</sup>

### 2.1.1.3. Treatments of *Striga* nitrogen trial at Bengou (STRIMIB)

Treatments	Plot numbers					
	R1	R2	R3	R4	R5	R6
A	102	203	304	402	502	602
B	101	204	302	401	501	603
C	104	202	303	403	504	604
D	103	201	301	404	503	601

Fieldplan:

		R3				R6	
7 m		1m					
504		503		504		503	
C		D		C		B	
501		502		501		502	
B		A		D		A	
		R3				R4	
304		303		404		403	
A		C		D		C	
50 m							
301		302		401		402	
D		B		B		A	
		R1				R2	
104		103		204		203	
C		D		B		A	
101		102		201		202	
B		A		D		C	



## 2.1.2. Effect of soil temperature on *Striga* germination and emergence

Experiment	STRITEMP
Objectives	To study the effect of different soil temperatures on <i>Striga</i> seeds buried at different depths in the soil.
Locations	Sadore
Design	RBD
Plot size	Three rows 8 m long.
Spacing	80 cm between hills and 80 cm between rows.
Thinning	3 plants per hill.
Weeding	Remove all weeds except <i>Striga</i> .
Replications	Ten.
Fertilizers	NPK ( 15-15-15 kg/ha <sup>-1</sup> ).
Cultivar	Sadore local
Treatments	a) Soil treatments 1) Polythene cover (increase temp.) 2) Bare soil (control)  b) <i>Striga</i> seed treatments 1) Seed buried at 5 cm 2) Seed buried at 10 cm 3) Seed buried at 15 cm 4) Seed buried at 20 cm
Date of planting	June 29, 1989
Crop protection	As required.
Irrigation	Rained.
Observations	1) Daily soil temperature (4 depths). 2) Germination of <i>Striga</i> seeds recovered from soil. 3) First date of <i>Striga</i> emergence. 4) # of emerged <i>Striga</i> plants at weekly interval. 5) First date of <i>Striga</i> flowering. 6) # of <i>Striga</i> plants at harvest. 7) # of panicles per hill at harvest. 8) Plant height in cm. 9) # of hills harvested. 10) Total grain yield. 11) 1000 grain weight.

# 2.1.2.1. Treatments of *Striga* temperature trial

Treatments	Plot numbers									
	R1	R2	R3	R4	R5	R6	R7	R8	R9	R10
A	101	201	301	401	501	601	701	801	901	1001
B	102	202	302	402	502	602	702	802	902	1002

Fieldplan:

24.0 M										
18.0 m	1.25 m		1.15 m							
	101	201	301	401	501	601	701	801	901	1001
	A	B	B	A	A	A	B	A	B	A
	2.0 m									
	102	202	302	402	502	602	702	802	902	1002
	B	A	A	B	B	B	A	B	A	B
R1 R2 R3 R4 R5 R6 R7 R8 R9 R10										

Treatments:

- A: Control, Bare soil
- B: Polythene covered soil

## 2.2. *Striga* experiments ISC

### 2.2.1. Longterm observation of *Striga hermonthica* in a millet field

<b>Experiment</b>	STR100T
<b>Objectives</b>	To observe <i>Striga hermonthica</i> in a field where millet is planted precisely each year in the same hill over a period of five years. Experiment started in 1989, in field 52.
<b>Locations</b>	Sadoré, 52.
<b>Plot size</b>	25 m x 60 m
<b>Spacing</b>	1 m x 1 m
<b>Thinning</b>	Three plants per hill.
<b>Weeding</b>	Twice before emergence of <i>Striga</i> .
<b>Fertilizers</b>	None.
<b>Date of planting</b>	June 19, 1989, partially replanted 29 June, 1989.
<b>Crop protection</b>	As required.
<b>Irrigation</b>	Rainfed.
<b>Observations</b>	1) Date of emergence of first <i>Striga</i>  2) Counting <i>Striga</i> plants in two week intervals after first emergence till two weeks after planting. Counting is done with handcounter for each hill with a frame of 1x1m.  3) Head and grain yield for each hill.

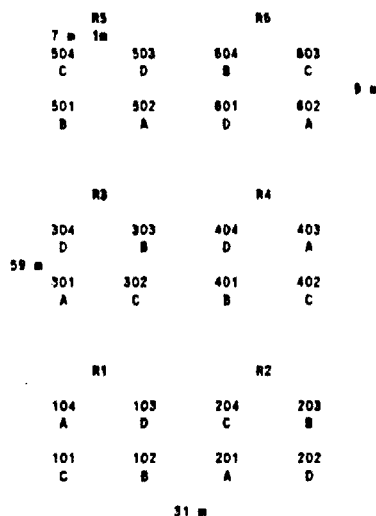
### 2.2.2. Effect of cultural practices on *Striga* infestation of pearl millet

<b>Experiment</b>	STRIMAN
<b>Objectives</b>	To study the effect of weeding and intercropping of pearl millet with cowpea on the infestation of <i>Striga hermonthica</i> on farmer's field.
<b>Locations</b>	Bengou, 3 farmer's field heavily infested with <i>Striga</i> in previous season. STRIMAN 1: Malam Abdou, STRIMAN 2: Ma Fane, STRIMAN 3: Kiaba Gouywa.
<b>Design</b>	2 x 2 factorial experiment.
<b>Plot size</b>	8 rows of 8 m length.
<b>Spacing</b>	1 m x 1 m for millet, 2 m x 2 m for millet/cowpea.
<b>Thinning</b>	3 plants per hill.
<b>Weeding</b>	Two weeding before first <i>Striga</i> emergence.
<b>Replications</b>	Six.
<b>Fertilizers</b>	15 kg ha <sup>-1</sup> N, 15 kg ha <sup>-1</sup> P2O5, 15 kg ha <sup>-1</sup> K (100 kg ha <sup>-1</sup> 15/15/15) at land preparation.
<b>Treatments</b>	Handweeding of all weeds except <i>Striga</i> : A Weeding of all weeds including <i>Striga</i> : B Intercropping millet (Gaya local)/cowpea (Gaya local): C Control (no weeding) : D
<b>Date of planting</b>	STRIMAN 1: June 21; STRIMAN 2 and 3: June 22, 1988.
<b>Irrigation</b>	Rainfed.
<b>Observations</b>	1) Emergence of millet. 2) Date of 75% flowering. 3) Date of first emergence of <i>Striga</i> in all plots. 4) Count number of <i>Striga</i> plants from first emergence in a two weeks interval till two weeks after harvest. 5) Final stand count (nursery of hills of the two central rows). 6) Yield of heads and grains of two central rows. 7) 1000 grain weight.

### 2.2.2.1. Treatments and randomisation of *Striga* management trial

Treatments	Plot numbers					
	R1	R2	R3	R4	R5	R6
A	104	201	301	403	502	602
B	102	203	303	401	501	604
C	101	204	302	402	504	603
D	103	202	304	404	503	601

Fieldplan:



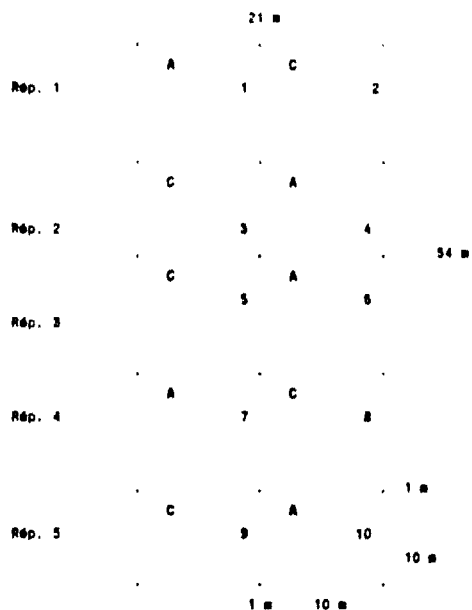
Treatments:

- A: Handpulling all weeds except *Striga*
- B: Weeding all weeds including *Striga* with «dabba»
- C: Intercropping with cowpea (Gaya local)
- D: Control (no weeding)

### 2.2.3. Effect of handpulling of *Striga* on yield of pearl millet

<b>Experiment</b>	STRIMPT
<b>Objectives</b>	To study the effect of handpulling of <i>Striga hermonthica</i> on yield of pearl millet in a longterm experiment.
<b>Locations</b>	Bengou, field of farmer: Mallam Balla; Sadoré St.
<b>Design</b>	RBD.
<b>Plot size</b>	10 rows of 10 m length.
<b>Spacing</b>	1 m x 1 m
<b>Thinning</b>	3 plants per hill.
<b>Weeding</b>	Two weedings before first emergence of <i>Striga</i> .
<b>Replications</b>	Five at Bengou, 20 at Sadoré.
<b>Fertilizers</b>	15 kg ha <sup>-1</sup> N, 15 kg ha <sup>-1</sup> P2O5, 15 kg ha <sup>-1</sup> K (100 kg ha <sup>-1</sup> 15 1/15/15) at land preparation.
<b>Treatments</b>	Handpulling of <i>Striga</i> only, no other weeding: A Control, no handpulling of <i>Striga</i> and no weeding: C
<b>Date of planting</b>	Bengou: June 22, 1988; Sadoré: June 20, 1988.
<b>Crop protection</b>	As required.
<b>Irrigation</b>	None.
<b>Observations</b>	1) Emergence of millet. 2) Date of 75% flowering. 3) Date of first emergence of <i>Striga</i> in all plots. 4) Count number of <i>Striga</i> plants from first emergence in a two weeks interval till two weeks after harvest. 5) Final stand count. 6) Yield of heads and grains. 7) 1000 grain weight.

### 2.2.3.1. treatments and randomisation of *Striga* handpulling trial at Bengou



#### Treatments:

- A: Handpulling *Striga* at two weekly intervals
- C: Control (no weeding)

### 2.2.3.2. Treatments and randomisation of *Striga* handpulling trial at Sadoré

*A* = Arrachage de *Striga*

*T* = Témoin

50 m					80 m
A	T	A	A	T	
40	39	38	37	36	
T	A	T	T	A	
31	32	33	34	35	
T	T	A	T	T	
30	29	28	27	26	
A	A	T	A	A	
21	22	23	24	25	
A	T	A	A	T	
20	19	18	17	16	
T	A	T	T	A	
11	12	13	14	15	
A	A	T	T	T	
10	9	8	7	6	
T	T	A	A	A	
1	2	3	4	5	



#### 2.2.4. Evaluation of wild millet species in pots for *Striga* reaction

Experiment	WINISTR1
Objectives	To study the reaction of some collections of wild millet species ( <i>Pennisetum violaceum</i> ) in pots, artificially infested by <i>Striga hermonthica</i> to find <i>Striga</i> resistance.
Location	Sadoré.
Design	9 x 9 balanced lattice design.
Pot size	11 l, 1/3 farmyard manure + 2/3 sand. 7'000 <i>Striga</i> seeds in top 5 cm layer of each pot.
Thinning	One plant per pot.
Replications	9.
Fertilizers	5 g CAN per pot four weeks after planting.
Entries	81.
Date of planting	May 18, 1989.
Crop protection	As required.
Irrigation	Regular sprinkler irrigation.
Observations	1) Date of emergence of millet. 2) Date of first emergence of <i>Striga</i> . 3) Counting of <i>Striga</i> plants in one week intervals after emergence till two weeks after harvest. 4) Date of first heading. 5) Number of heads per pot.

2.2.4.1. Entries for evaluation of wild millet species in pots for Striga reaction

Entry no.	Collection	Country	Location	Date of collection	Striga reaction					
					R1	R2	R3	R4	R5	R6
1	C-88-01	ALGERIE	TAMARABSEY	19/09/88	186	207	306	412	570	666
2	C-88-02	ALGERIE	IN ANQUEL	14/07/88	185	239	313	449	520	665
3	C-88-03	ALGERIE	ARAK	15/07/88	167	256	364	420	580	667
4	C-88-04	ALGERIE	AIN BALAH	16/07/88	172	214	374	428	515	672
5	C-88-05	ALGERIE	SALI	16/07/88	164	274	345	408	505	664
6	C-88-06	ALGERIE	TIMHOUN	17/07/88	170	278	325	441	546	670
7	C-88-07	ALGERIE	TAGHIRT	18/08/88	169	251	335	462	545	669
8	C-88-08	TUNISIE	ELHADOURIA (CAP BON)	07/09/88	171	226	348	472	530	671
9	C-88-09	TUNISIE	REJICHE	10/09/88	168	272	359	479	558	668
10	C-88-10	TUNISIE	JEBINIANA	12/09/88	139	240	380	409	555	629
11	C-88-11	TUNISIE	FERIANA	13/09/88	138	261	339	443	542	638
12	C-88-12	TUNISIE	MOULARES	13/09/88	140	203	323	435	532	640
13	C-88-13	TUNISIE	TOZEUR	14/09/88	145	273	333	467	576	645
14	C-88-14	ALGERIE	HASSI KHALIFA	14/09/88	137	232	349	474	572	637
15	C-88-15	ALGERIE	DJAMEY	16/09/88	143	211	355	457	521	643
16	C-88-16	ALGERIE	IDELES	18/09/88	142	227	302	451	553	642
17	C-88-17	ALGERIE	HIMHAFOK	14/07/88	144	269	318	423	516	644
18	C-88-18	TOCHAD	H'GOURA	28/10/88	141	253	370	410	502	641
19	C-88-19	TOCHAD	ARRADA (TENSSET)	28/10/88	175	257	328	477	503	675
20	C-88-20	TOCHAD	BAMBORT (AM DOUT GOZ)	28/10/88	174	204	354	455	549	674
21	C-88-21	TOCHAD	ABECHE	31/10/88	176	243	381	469	518	676
22	C-88-22	TOCHAD	ABECHE	31/10/88	181	228	308	425	528	681
23	C-88-23	TOCHAD	AMLEIOUNA	31/10/88	173	210	312	417	562	673
24	C-88-24	TOCHAD	CAMARA (BILTINE)	03/11/88	178	277	368	454	543	678
25	C-88-25	TOCHAD	IRIBA	06/11/88	178	271	378	438	523	678
26	C-88-26	TOCHAD	WADI WACHI (BIR BERDOBA)	07/11/88	180	254	340	430	573	680
27	C-88-27	TOCHAD	WADI WACHI (BIR BERDOBA)	07/11/88	177	224	319	404	569	677
28	C-88-28	TOCHAD	WADI ARSO (IRIBA)	07/11/88	157	215	387	442	531	657
29	C-88-29	TOCHAD	BIR DIMISSI (IRIBA)	08/11/88	158	280	301	432	563	656
30	C-88-30	TOCHAD	QUEREDA	08/11/88	158	238	315	401	539	658
31	C-88-31	TOCHAD	CHARO (GOZ BEIDA)	22/11/88	163	252	327	481	526	663
32	C-88-32	TOCHAD	ABDI	23/11/88	155	221	378	481	578	655
33	C-88-33	TOCHAD	AM BAK	24/11/88	161	267	338	471	585	661
34	C-88-34	TOCHAD	BOKORO	26/11/88	160	205	357	422	501	680
35	C-88-35	TOCHAD	QUEREDAYA	27/11/88	162	238	332	411	551	662
36	C-88-36	NIGERIA	KAPTARA (DIRKA)	01/12/88	159	255	353	448	514	659
37	S-88-177	NIGERIA	MILFOTIS (CALIGANA)	02/11/88	121	261	321	456	511	621
38	S-88-178	NIGERIA	MACHILLA (MONGOHU)	02/11/88	120	233	377	468	508	620
39	S-88-179	NIGERIA	KONGOMU	01/12/88	122	217	344	478	552	622
40	S-88-180	NIGERIA	KAPTARA (DIRKA)	12/7/88	127	222	358	414	541	627
41	S-88-181	TOCHAD	KARAL		119	270	328	446	526	619
42	S-88-182	TOCHAD	HADJER EL HAMIS		125	248	351	424	580	625
43	S-88-183	TOCHAD	QUEREDAYA		124	237	372	434	566	624
44	S-88-184	TOCHAD	FANTA (TOURBA)		126	259	307	408	522	626

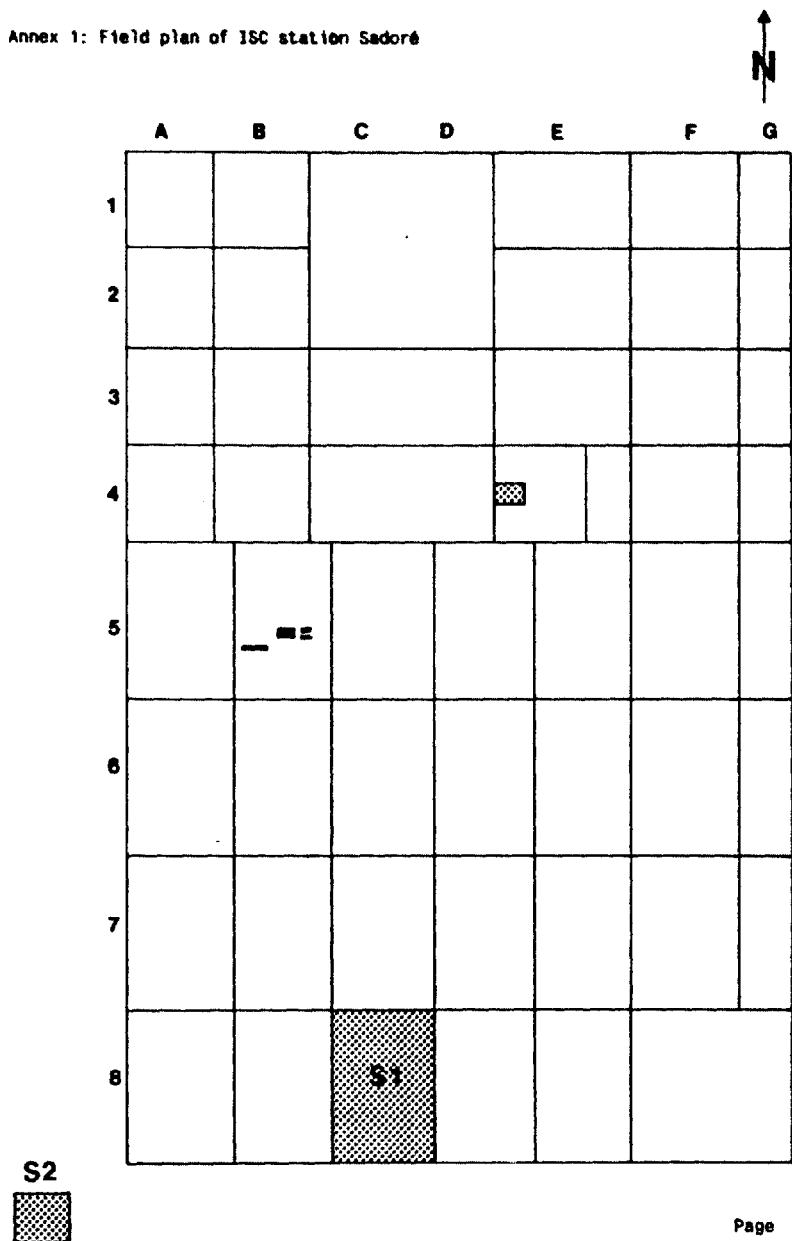
ICRISAT Library

RP

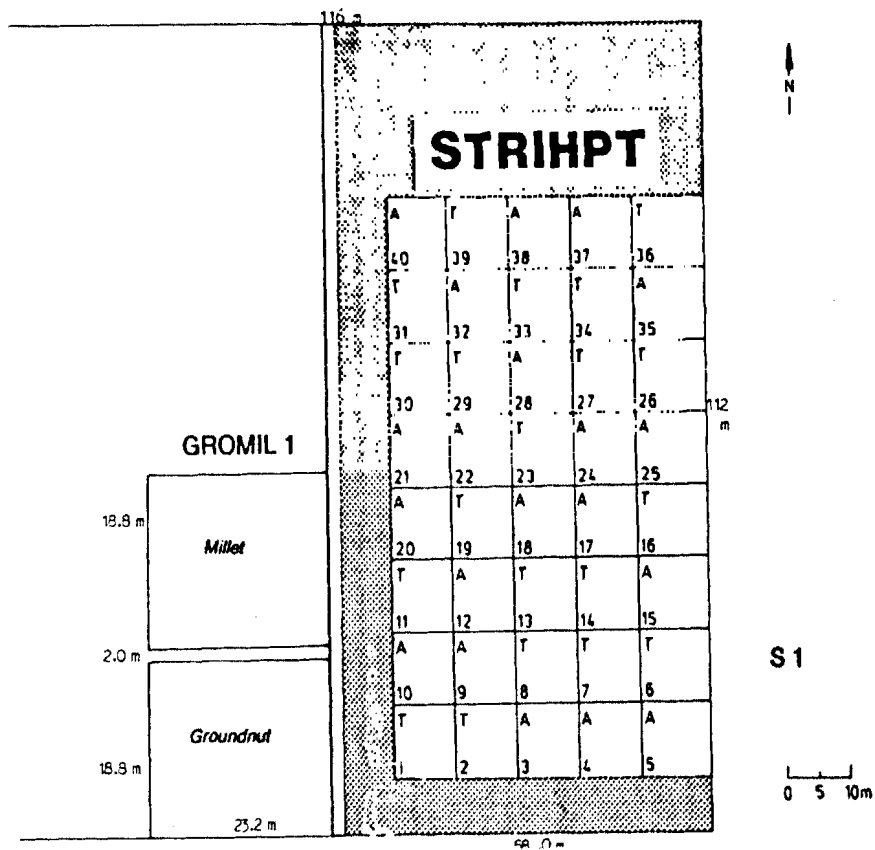
08968

Entry no.	Collection	Country	Location	Date of collection	R1	R2	R3	R4	R5	R6
45	S-88-185	TCHAD	TOURBA		123	202	311	445	581	828
46	S-88-186	TCHAD	M'BOURA		103	235	383	455	578	803
47	S-88-187	TCHAD	ARRADA		102	218	334	427	588	802
48	S-88-188	TCHAD	MASAREF TERSEF		104	278	347	416	518	804
49	C-88-189	TCHAD	MASBARNA (MOITO)		109	286	388	403	554	809
50	C-88-190	TCHAD	BILTINE		101	248	305	440	512	801
51	S-88-191	TCHAD	WADI BITEA		107	235	317	429	504	807
52	S-88-192	TCHAD	WADI LOBODE (AM LEIOUNA)		108	236	322	484	561	806
53	S-88-193	TCHAD	WADI BATHA		108	201	373	478	538	808
54	S-88-194	TCHAD	ABDI		105	241	342	458	535	805
55	S-88-195	TCHAD	KOUKOU ANGARANA (BAHR AZOUN)		112	280	310	470	580	812
56	S-88-196	TCHAD	BIR BERDOBA		111	220	389	480	510	811
57	S-88-197	TCHAD	WADI ARSO		113	284	304	483	506	813
58	S-88-198	TCHAD	BIR DIMISSI (IRIBA)		118	208	343	447	557	818
59	S-88-199	SOUDAN	WADI AZUM (KADJEU)		110	244	320	421	540	810
60	S-88-200	SOUDAN	WADI KUNDO		116	283	381	413	536	816
61	S-88-201	SOUDAN	ZALINGUEI		115	218	350	405	574	815
62	S-88-202	SOUDAN	WADI AZUM (MELA BEIDA)		117	275	382	437	571	817
63	S-88-203	SOUDAN	WADI MAYA (GIMEZA)		114	231	330	433	525	814
64	S-88-204	SOUDAN	WADI GENDI (KALOKITTING)		148	219	341	418	527	848
65	S-88-205	SOUDAN	WADI AMER (JROUPH)		147	288	328	415	575	847
66	S-88-206	SOUDAN	WADI SUBARRA (MELLAM)		149	247	375	450	567	849
67	S-88-207	SOUDAN	WADI TAORA (MELIAM)		184	245	348	444	507	854
68	S-88-208	SOUDAN	MELLAM		146	260	360	436	547	846
69	Sorghum	ICRISAT			152	208	331	407	517	852
70	Sorghum	ICRISAT			151	276	318	475	533	851
71	MMH 110	ICRISAT			153	234	385	458	559	853
72	Ex Bornu	ICRISAT			150	212	309	465	537	850
73	Sadoré 1.	ICRISAT			130	283	352	431	544	830
74	CIVT	ICRISAT			129	246	356	402	534	829
75	BJ 104	ICRISAT			131	223	336	439	558	831
76	BJ 104	ICRISAT			136	282	314	480	564	838
77	MMB 3	ICRISAT			128	209	371	488	524	828
78	MB 3	ICRISAT			134	242	303	473	577	834
79	7042	ICRISAT			133	230	337	418	513	833
80	ICMS 8410	ICRISAT			135	213	324	452	509	835
81	3/4 HK	ICRISAT			132	278	376	426	548	832

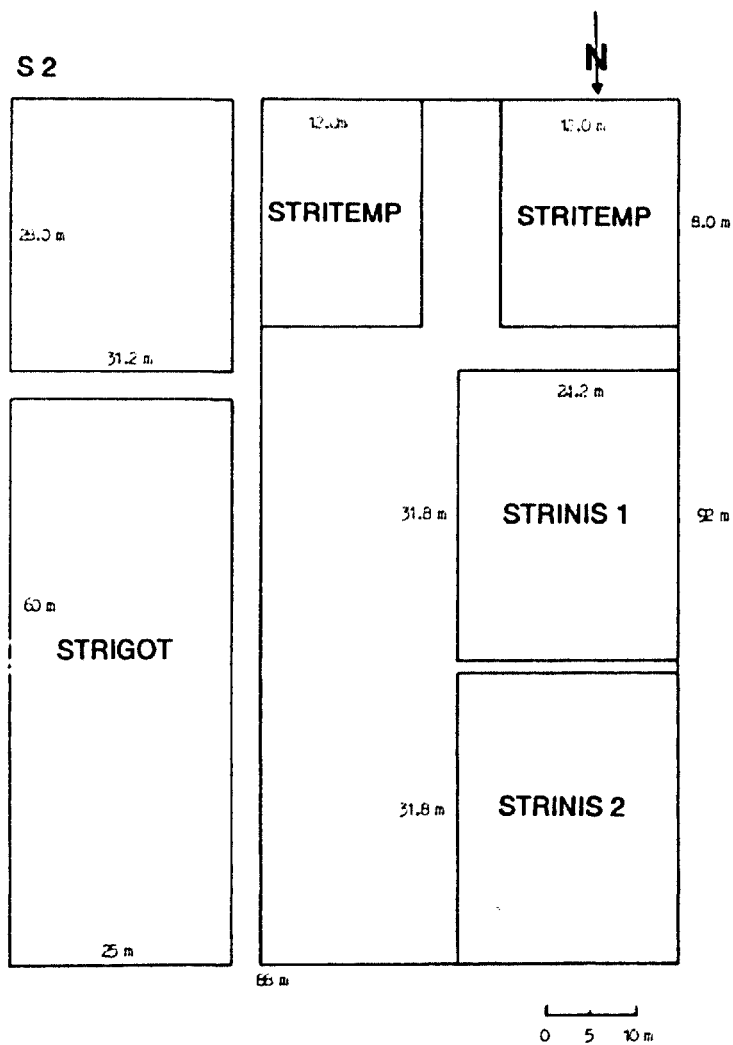
Annex 1: Field plan of ISC station Sadoré



Annex 2: Field plan of *Striga* sick plot S 1 at Sadoré



Annex 3: Field plan of *Striga* sickplot S 2 at Sadoré



#### Annex 4: Summary list of *Striga* trials conducted at ISC

Trial Title	Acronym	Scientist	Entry		Plot	
			Treatment	Pops	Row	Location
Influence of Cultural Practices on <i>Striga</i>	STRJMAN	JW/MAO	4	0	4	Bengou
Influence of Temperature on <i>Striga</i>	STRITEMP	MAO	2	10	4	Sadoré
<i>Striga</i> Handpulling Trial	STRIHPTB	JW/MAO	2	10	1	Bengou
Screening of Wild Millet for <i>Striga</i>	WJMISTRI	JW/MAO	81	0	1	Sadoré
Influence of Nitrogen on <i>Striga</i>	STRINZB	MAO	4	0	4	Bengou
Influence of Nitrogen on <i>Striga</i>	STRINIS	MAO	4	0	4	Sadoré
<i>Striga</i> Handpulling Trial	STRIHPTS	JW/MAO	2	40	1	Sadoré
<i>Striga</i> Observation Trial	STRIGOT	JW/MAO	1	1500	1	Sadoré