



International Crops Research Institute for the Semi-Arid Tropics

Sitemap | E-mail | Intranet | Open Access | Français | CGIAR Links | Search

Home | Who we are | What we do | Impacts | Locations | Newsroom | Careers



Genebank

Sorghum

Germplasm Collections

Taxonomy

Core Collections

Mini Core Collections

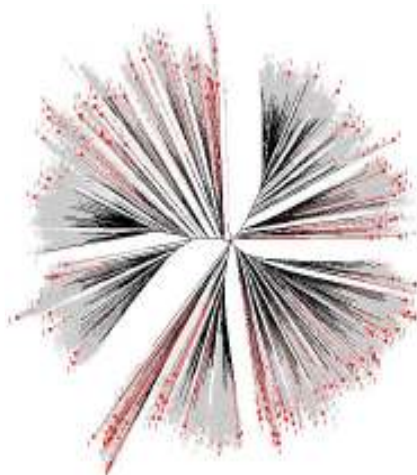
Reference Set

Random Core Selection

Genebank

Reference Set

A reference set of 384 accessions was then defined for allele mining which captured 78% of alleles (615 alleles) produced in composite germplasm collection. This set consisting of 23 wild, 4 advanced cultivars, 25 breeding materials and 332 landraces. Out of 384 accessions of reference set, for 9 accessions there were no seed. However, at present we are having seed for 375 accessions [Click here for details on Accessions](#). The average gene diversity among the reference set is 0.713 with an average PIC value 0.679, which is equal to global composite collection. Reference set is being used for allele mining under ADOC project. From this set, we have identified a representative sample of 48 accessions for use in marker genotype validation and as a smaller set with which to begin exploration of global sorghum germplasm.



© by ICRISAT. All rights reserved.